

In-town Nature Walk, Continued

Segment 1 is described on the other side.

SEGMENT 2: BOATHOUSE TO CITY PARK
1 mile. trees, gardens, shore access

From the Boathouse, turn up Commercial St., take your first left onto Bayview St. and stroll past cozy cottages and gardens to Allyn St. Turn left on Allyn and walk down to the Allyn Street Public Access to the shore. Waterfall Arts has placed a “feathered stone” installation to mark this access point. Low tide exposes glacially sculpted and polished bedrock, varieties of seaweed, birds, and a place to swim, wade, or watch the water. After viewing the bay, walk up lovely Allyn St. to Northport Ave.

On Northport Ave., turn right and go half a block to see the State Champion Copper Beech tree standing majestically in the yard of the “White House” across the street. Then turn around and walk back south on the Northport Ave. sidewalk. Across Northport Ave. from Allyn St., the State Champion Black Locust stands in the yard of another white house, with a rope swing hanging from a high branch. The yard has several other huge locusts as well, and pin oaks along Northport Ave. These trees are at private residences and should be admired from the street. The whole avenue is lined with regal trees.

Continue south on the Northport Ave. sidewalk to City Park. Along the way, you pass under grand linden (basswood) trees and horse chestnut trees. Across the street stand some large old northern red oaks.

Belfast City Park has mature native and exotic trees, birds, a brook, swimming pool, tennis courts, playground, picnic shelter with grill, restrooms, and parking. Concession stand in summer. Walk the loop trail under large horse chestnut, basswood, maple, red oak, white ash, and various conifers. The park was planted as an arboretum early in the 20th century. Just north of the entrance gate is a Kentucky Yellowwood, uncommon in New England.

SEGMENT 3, CITY PARK TO KIRBY LAKE, “THE MUCK”
1.5 miles. trees, gardens, songbirds

From City Park, retrace your steps on Northport Ave. toward town, and turn left at the State Champion Black Locust onto Salmond St. On the right, between the second and third houses facing Salmond, a public pathway to the right takes you through “Birdland,” a traditional birding spot with tall trees. The path runs through to Court St. and past St. Margaret’s Church. Across Court St. from the church a stately catalpa tree fills the dooryard of a home. Its long seed pods resemble footlong beans. Turn left onto

Elm St., left on Cedar, right on Bradbury, and right onto Charles St. The homes you pass have interesting trees, shrubs, and flowers. Charles St. is informally agreed upon as a pedestrian street. Homeowners and few others drive on Charles St.

When you get to Miller St., cross and turn left, walk uphill, peering at bird feeders in yards. At Kirby Lake, “The Muck,” on your right, a trail takes you around the pond through woods and across bridges built by the Boy Scouts to the Lincolnville Ave. side of the pond. This is a good place to watch and listen to frogs, spring migrant and nesting birds, and wading birds. Parking.

SEGMENT 4, KIRBY LAKE TO THE FOOTBRIDGE
1.5 miles. trees, songbirds, cemetery stones

From Kirby Lake, cross Lincolnville Ave. and follow the trail over private property which looks like a park with tall trees and low forest ground cover. The trail curves through this peaceful place, crosses a brook, a stone wall, through a narrow strip of woods and through the parking lot behind Quirk Ford/Chrysler to Main St.

Cross Main St. into Grove Cemetery (no dogs). Walk the perimeter loop around the cemetery, returning to your entry point. Among the beautiful old trees, birding is good, especially around the cemetery edges. Many of the monuments are carved from local granite, and graceful sculptures are the legacy of gifted sculptors. A peaceful walk around the cemetery returns you to Main St., where you turn left and walk to Wales Park across the street. Picnic tables, portable restrooms, parking.

From Wales Park, cross Main St., walk downhill, bear left on Anderson, and go 2 blocks downhill to Church St. Cross Church and enter Eleanor Crawford Park, a tiny park in the triangle between Church and High Streets, with concrete stair steps. This little gem is Belfast’s smallest park, with a World War II memorial, flagpole, picnic table, and bench. It makes a good rest stop. The Belfast Garden Club tends a flower garden, “Margaret’s Point,” at the end of this park. Cross High St. onto Bridge St., go 2 blocks and turn right onto Pierce St. to the Armistice Footbridge. Parking.



Yellow-bellied sapsucker.
Photo by Dan Avenier



BELFAST BAY WATERSHED COALITION
www.belfastbaywatershed.org



HABITAT BELFAST
www.greenwaysecocenter.org
855-884-2284



OUR TOWN BELFAST
www.ourtownbelfast.org



FRIENDS OF BELFAST PARKS
www.friendsofbelfastparks.org



BELFAST GARDEN CLUB
www.belfastgardenclub.org

o o o

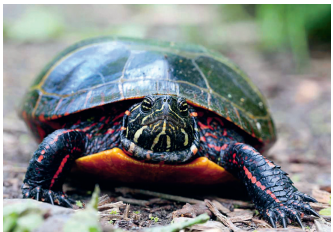
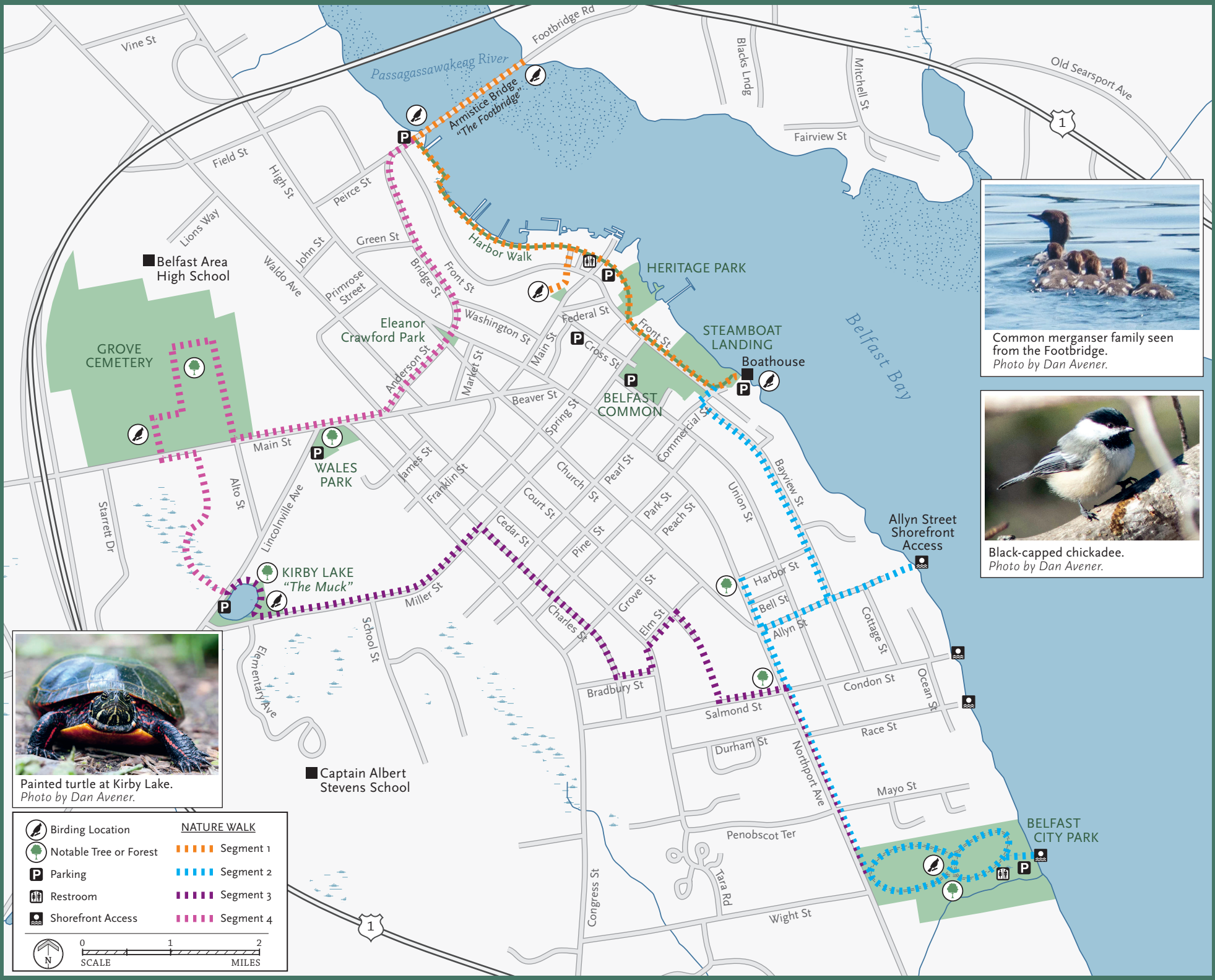
Download the brochure from the
Belfast Bay Watershed Coalitions’s website:
www.belfastbaywatershed.org

BELFAST
IN-TOWN
NATURE TRAIL



Ruby-throated hummingbird. Photo by Dan Avenier

Come experience the nature of
Belfast by walking tree-lined streets,
city parks, birding hot spots and
postage stamp habitats for wildlife,
urban gardens, some private land,
public shoreline access, and the
Harbor Walk.



Painted turtle at Kirby Lake.
Photo by Dan Avener.



Common merganser family seen from the Footbridge.
Photo by Dan Avener.



Black-capped chickadee.
Photo by Dan Avener.



White-breasted nuthatch.
Photo by Dan Avener.

Belfast In-Town Nature Trail

There are many points of access to the trail. Segments can be enjoyed separately, in either direction, or threaded together to form a 5-mile loop. Six convenient parking areas provide easy access to the walking trail: Armistice Footbridge, City Wharf, The Boathouse, City Park, Wales Park, and Kirby Lake ("The Muck").

■■■■■■■■■■
SEGMENT 1: ARMISTICE BRIDGE TO THE BOATHOUSE
0.7 mile. boats, shorebirds, ducks

The Armistice Bridge (the old U.S. Rt. 1) offers excellent birding for loons, gulls, ducks, ospreys, and eagles, as well as fishing in season. Across the river, the eastern end of the bridge spans a tidal flat at low tide, where various species of shorebirds feed in the mud. From the west end of the bridge, follow the wooden dock and concrete Harbor Walk through the middle of Front Street Shipyard's bustle of business and diversity of boats to the Public Wharf: flower gardens courtesy of Belfast Garden Club, restrooms, parking.

Side trip: Across Front Street, you can walk uphill to Main Street Park, a work in progress, where the birding is excellent behind the wastewater treatment plant.

The Harbor Walk continues from the Public Wharf past Heritage Park, which has picnic tables, a grassy lawn, and a beach at low tide. Continue to The Boathouse, which has gardens, public access to the beach, and another vantage point for watching seabirds. Parking

Segments 2, 3 and 4 are described on the other side.